

ART
DNA



Zhongshan Gamder Electric Appliance Co., Ltd.

Tel: 0086 760 2255 1677 www.artdna-global.com Mail: artdnasales_01@gamder.cn
Addr: No.8-1 Middle of Industry Avenue, XiaoLan Town, ZhongShan, GuangDong, China.



Smart LED Driver Series   (0-10V)



Featuring Silicon Labs' (U.S.) dedicated smart home chip for superior performance and reliability.



Zigbee-MG21



Matter-MG24

Upgrade Your Existing Lights - No Fixture Replacement Needed!



Simply replace the traditional driver with our smart driver to enable dimming and seamless integration into smart home systems.





 matter

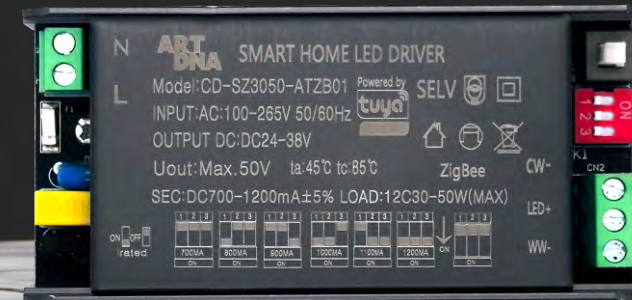
The Matter protocol integrates diverse smart home platforms into Matter-certified smart products, enabling control across multiple platforms and facilitating seamless interaction and collaboration among devices from different ecosystems.



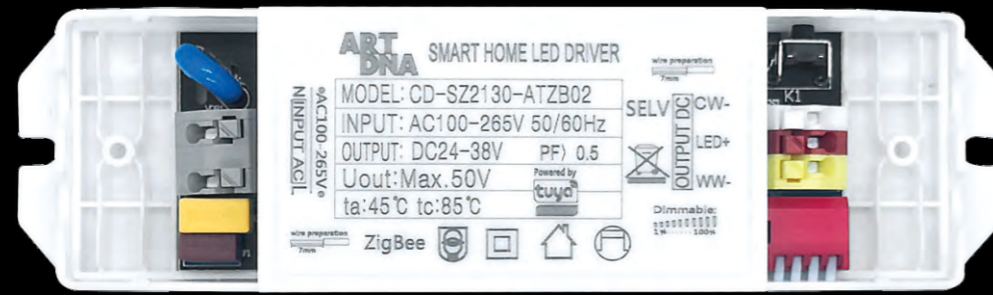
Ultra-Low Standby Power | Only 0.08W



CW Dimming - Precision Control for Smarter Lighting



Downlights, Spotlights Smart Driver Series



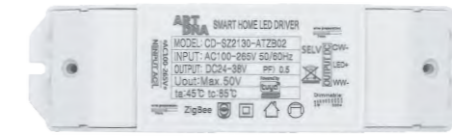
With DIP switch - More Control, More Convenience
 (power adjustment)



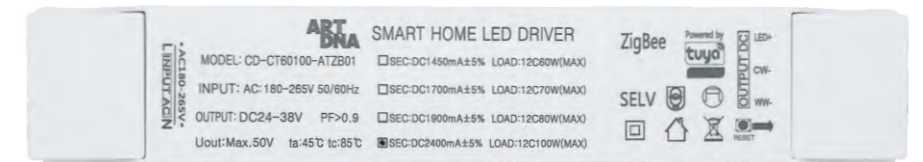
With Reset Button for Quick Troubleshooting



Downlights, Spotlights Smart Driver Series



MODEL:	CD-SZ2130 Series	CD-SZ0512 Series
DIMENSIONS:	145*40*30mm	130*39*26.5mm
INPUT:	AC100-265V	AC100-265V
OUTPUT:	DC24-38V	DC24-38V
OUTPUT CURRENT:	600-700MA	150-300MA
POWER:	25-30W	5-12W
COLOR:	Single/ Dual-color	Single/ Dual-color
PROTOCOL:	Zigbee/ Bluetooth/ Matter/ WiFi	Zigbee/ Bluetooth/ Matter/ WiFi/ DALI/ 0-10V



MODEL:	CD-CT60100 Series
DIMENSIONS:	230*40*28mm
INPUT:	AC180-265V
OUTPUT:	DC24-38V
OUTPUT CURRENT:	1450-2400MA
POWER:	60-100W
COLOR:	Single/ Dual-color
PROTOCOL:	Zigbee/ Bluetooth/ WiFi

Downlights, Spotlights Smart Driver Series

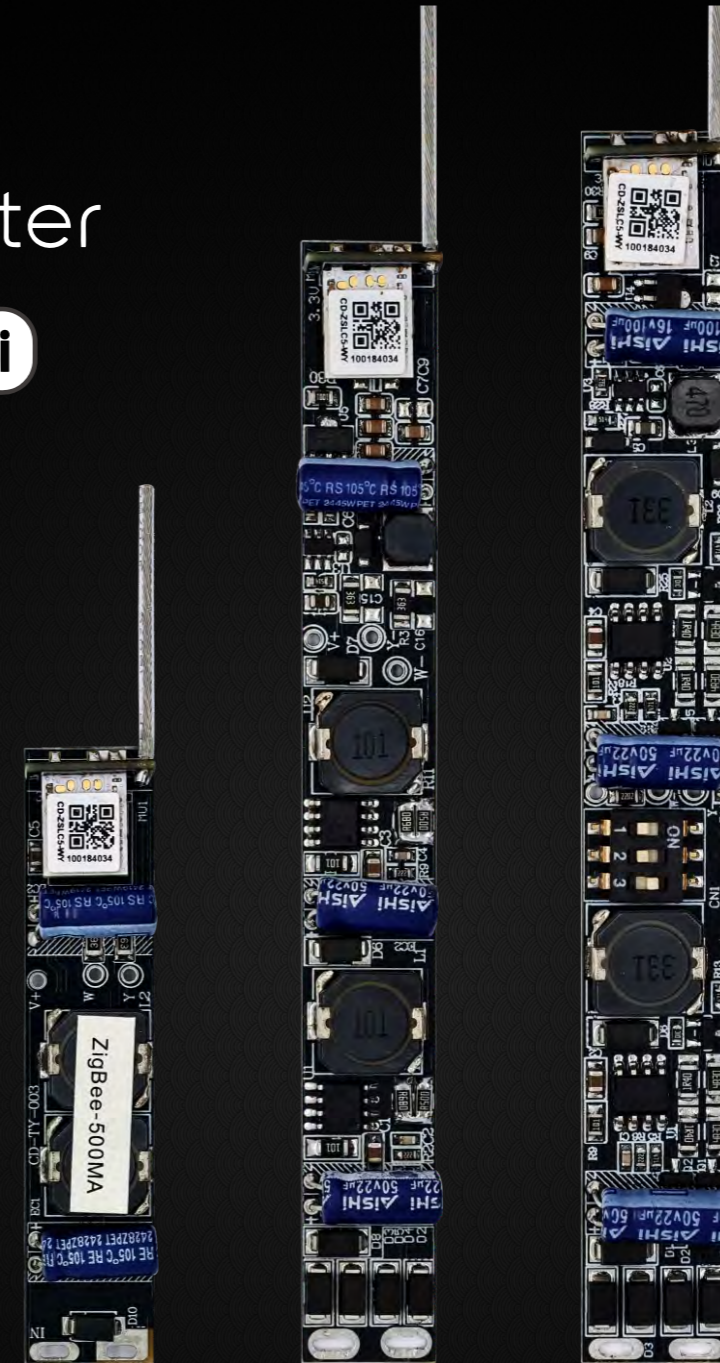


- **MODEL:** CD-YX0512(5) Series
- **DIMENSIONS:** φ55(φ65)mm
- **INPUT:** AC100-265V
- **OUTPUT:** DC24-38V
- **OUTPUT CURRENT:** 150-300MA(350MA)
- **POWER:** 5-12W(15W)
- **COLOR:** Single/ Dual-color
- **PROTOCOL:** Zigbee/ Bluetooth/ WiFi

- **MODEL:** CD-SZ3050 Series
- **DIMENSIONS:** 100*47*25/ 190*42*28mm
- **INPUT:** AC100-265V
- **OUTPUT:** DC24-38V
- **OUTPUT CURRENT:** 600-1200MA
- **POWER:** 25-50W
- **COLOR:** Single/ Dual-color
- **PROTOCOL:** Zigbee/ Bluetooth/ WiFi



(0-10V)



Magnetic Lights Smart Driver Series



Magnetic Lights Smart Driver Series



MODEL:	CD-CX400(700) Series with DIP Switch
DIMENSIONS:	116*13.4*7.7mm
INPUT:	DC48V
OUTPUT:	DC24-38V
OUTPUT CURRENT:	150-700MA
POWER:	5-30W
COLOR:	Single/ Dual-color
PROTOCOL:	Zigbee/ Matter/ DALI

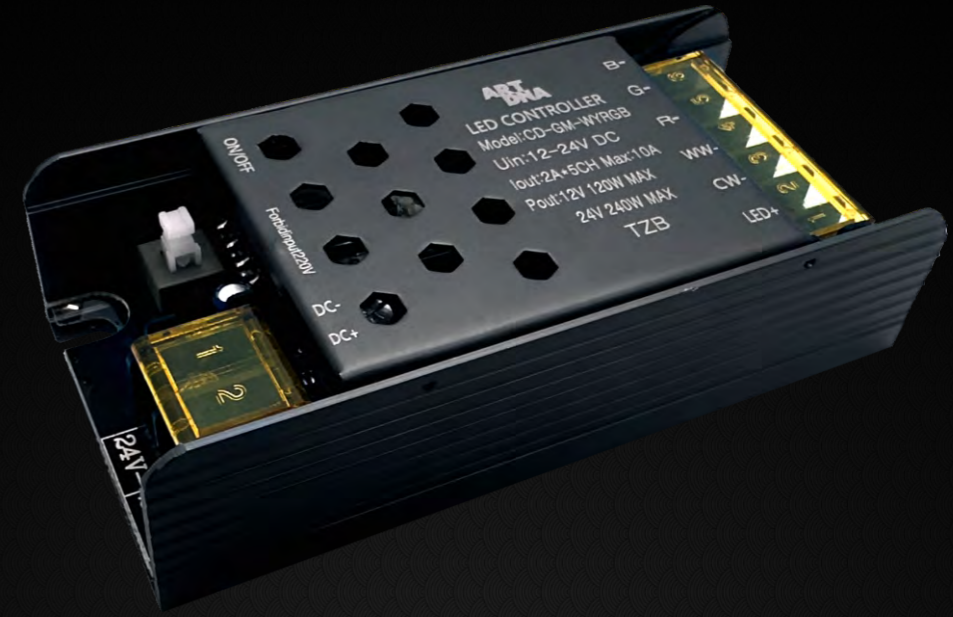
MODEL:	CD-CX700~150 Series
DIMENSIONS:	108*13*8.5mm
INPUT:	DC48V
OUTPUT:	DC24-38V
OUTPUT CURRENT:	150-700MA
POWER:	5-30W
COLOR:	Single/ Dual-color
PROTOCOL:	Zigbee/ Bluetooth



MODEL:	CD-CX500~150 Series
DIMENSIONS:	63*13*9.5mm
INPUT:	DC48V
OUTPUT:	DC24-38V
OUTPUT CURRENT:	150-500MA
POWER:	5-20W
COLOR:	Single/ Dual-color
PROTOCOL:	Zigbee/ Bluetooth

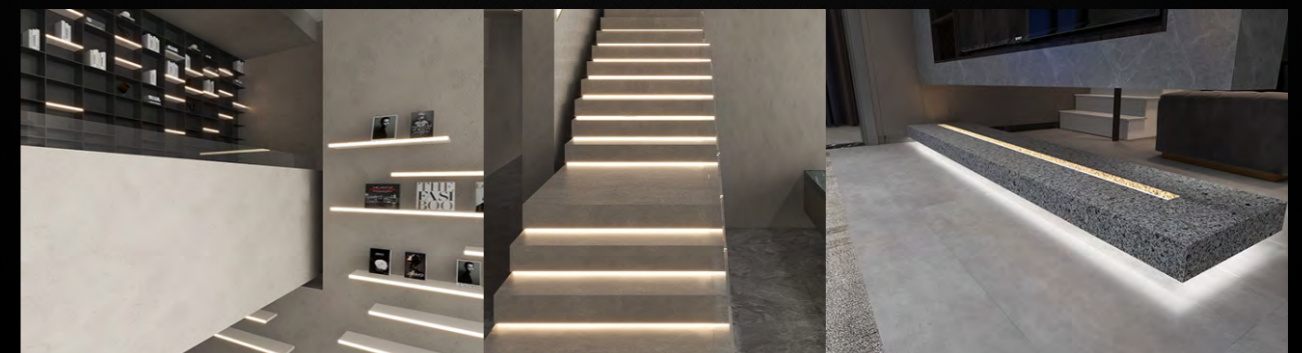


LED Strips Smart Driver

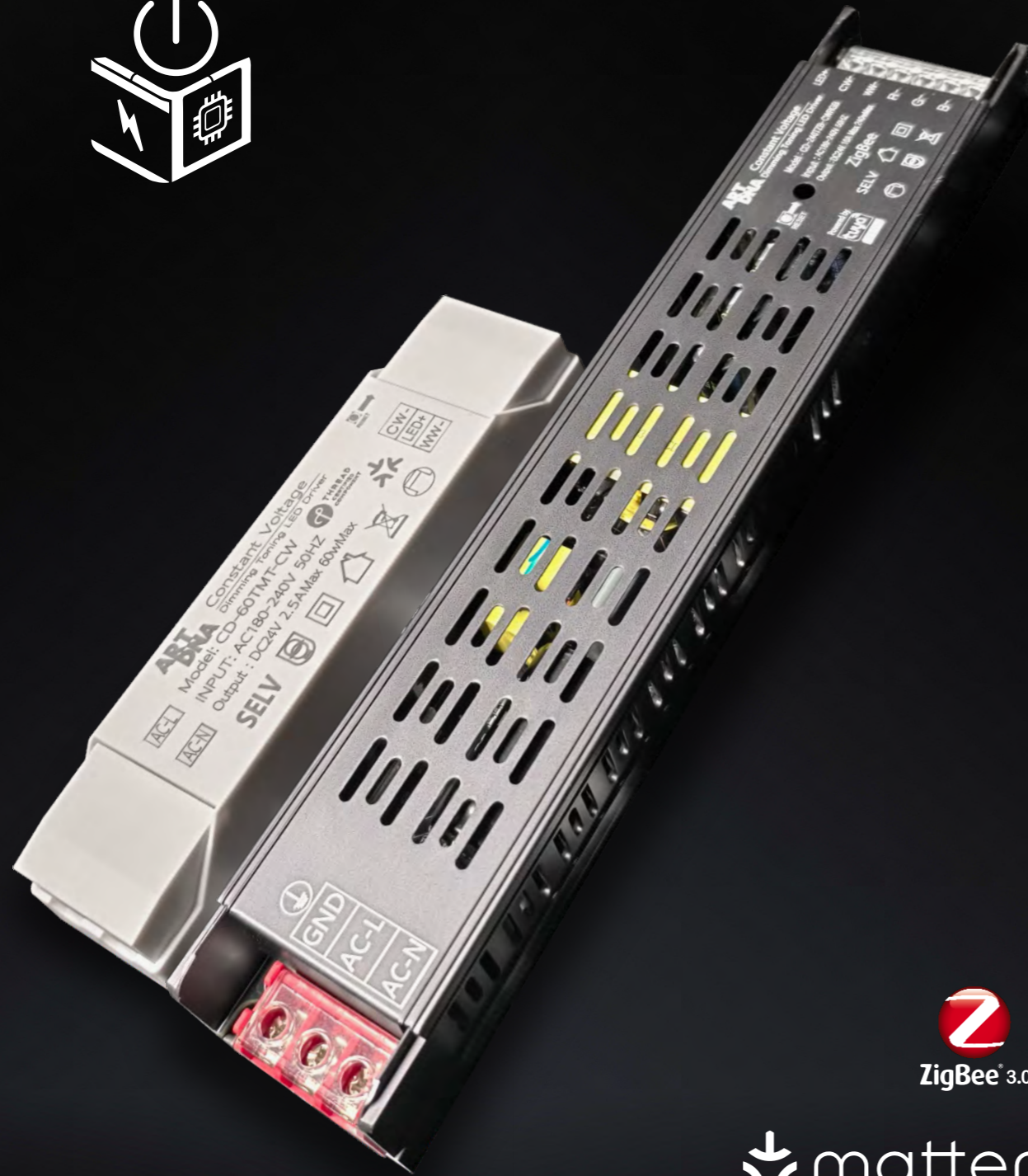


(0-10V)

MODEL:	CD-GM Series	CD-GM02 Series
DIMENSIONS:	100*47*25mm	120*47*25mm
INPUT:	DC12-24V	DC12-24V
OUTPUT:	DC12-24V	DC12-24V
OUTPUT CURRENT:	10A	20A
POWER:	120W/240W	240W/480W
COLOR:	Multiple Color Options (W/ WY/ RGB/ WRGB/ WYRGB)	Single/ Dual-color (W/ WY)
PROTOCOL:	Zigbee/ Bluetooth/ Matter/ WiFi/ DALI	Zigbee/ Bluetooth/ Matter/ WiFi



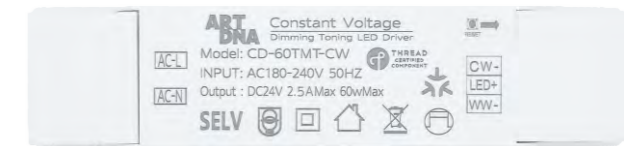
All-in-One Power Supply



All-in-One Power Supply Series



MODEL:	CD-150 Series	CD-240 Series	CD-350 Series
DIMENSIONS:	230*49*30mm	280*49*30mm	300*62*32mm
INPUT:	AC180-240V	AC180-240V	AC180-240V
OUTPUT:	DC24V	DC24V	DC24V
OUTPUT CURRENT:	6.3A	10A	15A
POWER:	150W	240W	350W
COLOR:	Multiple Color Options (C/ CW/ RGB/ CRGB/ CWRGB)		Single/ Dual-color (C/ CW)
PROTOCOL:	Zigbee/ Bluetooth/ Matter/ WiFi		Zigbee/ Bluetooth/ Matter/ WiFi/ DALI



MODEL:	CD-60 Series
DIMENSIONS:	166*40*28mm
INPUT:	AC180-240V
OUTPUT:	DC24V
OUTPUT CURRENT:	2.5A
POWER:	60W
COLOR:	Single/ Dual-color (C/ CW)
PROTOCOL:	Zigbee/ Bluetooth/ Matter/ WiFi