

**ART  
DNA**

**Reflected Lighting Expert**

Make High-Quality Light   Create Tasteful Lamp





## Company Introduction

The ARTDNA brand was founded in 2012 and is one of the two major brands of Zhongshan Gamder Electric Appliance Co., Ltd. The company focuses on the research and development, production, and manufacturing of electrician, lighting, and intelligent products, with a perfect production and testing system. It is a state-recognized "high-tech enterprise" that has participated in drafting many national standards and has more than 120 national product patents.

## Precision Machining

Professional machines and precise testing equipment guarantee the excellent performance and service life of each lamp. ARTDNA is committed to providing customers with high-quality products based on its strong technical strength, and to satisfy every customer with its advanced solutions and professional services.



## Precision Testing And Quality Control

ARTDNA has a national-level CNAS optoelectronic laboratory with advanced testing equipment such as EMC, darkroom, integrating sphere, etc., and has passed the ISO9001 international quality system certification.







National CNAS Laboratory



ISO9001 Certificate



GUANGDONG TOP BRAND Certificate



German Red Dot Design Award



Reflective Light Patent Certificate



PCT International Invention Patent Certificate



High-Tech Enterprise Certificate



Governing Unit of China Standardization Administration

## Interior Space Lighting Basics

Preface: With the continuous improvement of the quality of life, on the basis of focusing on the craftsmanship and design of lamps, users have higher requirements for the essence of illumination - "light", which requires us to have a deeper understanding of the code of light.



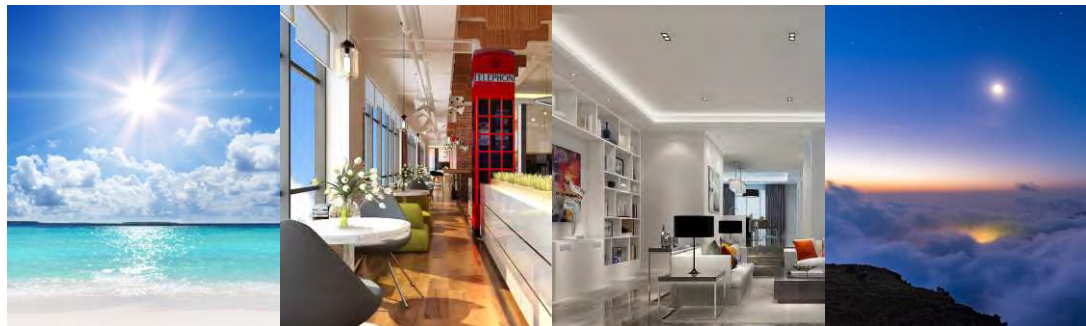
High Luminous Flux



Low Luminous Flux

### Luminous flux

Luminous flux represents how much light a lamp can emit. The higher the luminous flux, the brighter the light, measured in lm.



Clear Sky About 10,000 Lux

Office 300-500 Lux

Home 50-300 Lux

Moonlight About 0.1 Lux

### Illumination

Illumination refers to the amount of light that can be received per unit area. The higher the illumination, the brighter the illuminated object, measured in lux or lx.

## Color Temperature

Color Temperature is a unit of measurement that indicates the color component contained in the light, color temperature is usually expressed in K.

Whether in nature or the home environment, different color temperatures give us different psychological feelings. Low color temperature light tends to be yellow, yellow is a warm tone, so low color temperature light is often called "warm light", high color temperature light tends to be blue, blue belongs to the cold tone, so high color temperature light is also called "cold light".

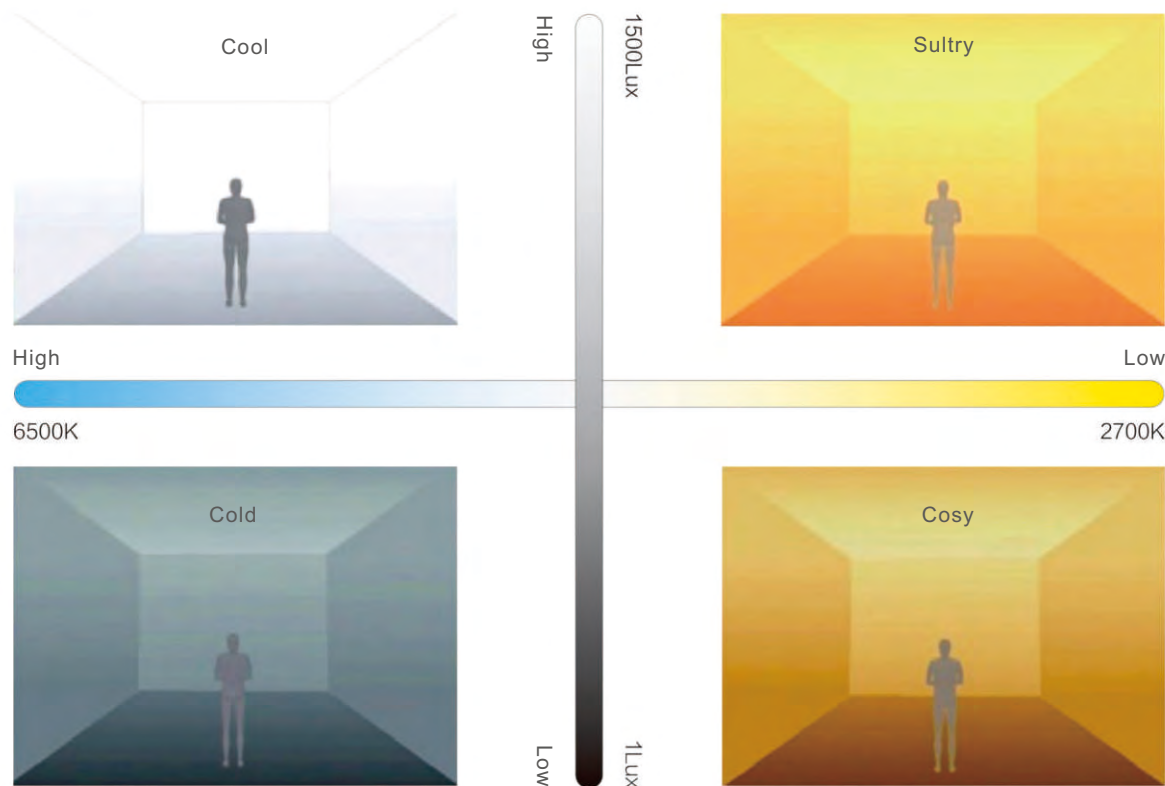


Home Lighting Effect At Low Color Temperature



Home Lighting Effect At High Color Temperature

Different color temperatures interact with different illumination levels and also give people different psychological feelings.



## Luminous efficiency

Luminous efficiency indicates the amount of luminous flux that can be provided per watt of power. The higher the luminous flux, the more energy-efficient the luminaire.





## Luminous efficiency

Luminous efficiency indicates the amount of luminous flux that can be provided per watt of power. The higher the luminous flux, the more energy-efficient the luminaire.



## Color Rendering

Color rendering, also known as CRI, describes the degree to which light reproduces the color of the object being illuminated. Among them, the sun's CRI is 100, and the lights are all simulations of sunlight. The higher the CRI, the more realistic and full the color of the items under the light. General lamps CRI is about 80, and high-quality lamps CRI can reach more than 90, the use of high CRI lamps in the home, will make the home environment more natural and beautiful.



Ra95

Ra80

## Beam Angle

Beam angle refers to the angle at which the light intensity is equal to 50% of the maximum aperture on any plane perpendicular to the neutral line of the beam. The larger the beam angle, the smaller the central light intensity, and the larger the spot.



Beam Angle &lt;math&gt;&lt; 20^\circ&lt;/math&gt;

Beam Angle Between  $20^\circ$  —  $40^\circ$ Beam Angle  $> 40^\circ$

## Glare

Glare is the discomfort that human eyes feel when observing high-brightness light source products. The glare index is also called the UGR. The higher the UGR, the more dazzling the light source is.

Glare is one of the causes of visual fatigue, which has adverse effects on human health and emotions. Scientific optical solutions and professional lighting design can effectively avoid the problem of glare.







### What is light health?

"Light health" emphasizes a more scientific way of lighting.

People's requirements for lighting mainly include three aspects:

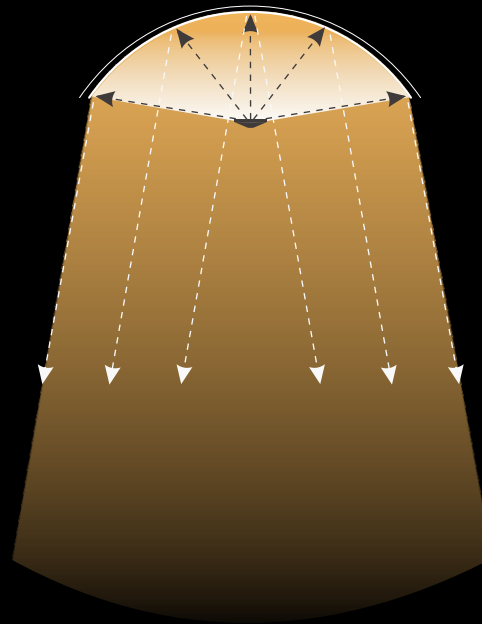
- Firstly, functional requirements, that is, meeting the most basic lighting needs;
- Secondly, decorative requirements for aesthetics;
- Thirdly, physical health and mental health requirements.

# ARTDNA Healthy Lighting Solution

## Reflective Optical Design

Reflective light is a hidden light source that reflects light through the structure of the luminaire to avoid discomfort to the human eyes from looking directly at the light source.

ARTDNA reflective light luminaires are optimized by reflecting the light out, using advanced light control technology to allow each ray of light to be cut and differentiated for processing, effectively controlling the direction of the light, and ultimately overlapping and superimposing at the center of the light field to form a very uniform light spot and focus the output.





# Reflective Optical Design

Three Advantages Of Reflective Optical Design

## Zero Glare Value

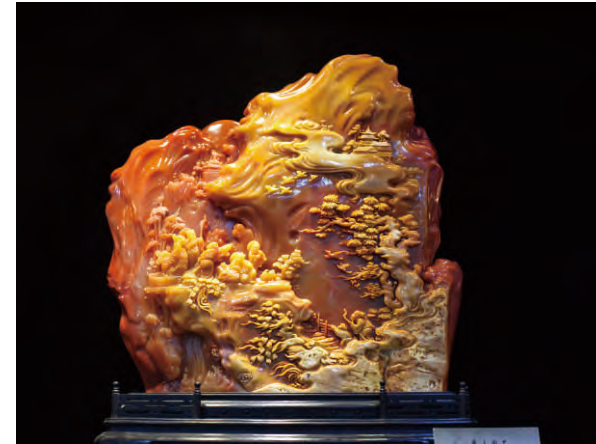
Maximum Glare Protection



ARTDNA Reflective Light Luminaires Test Results : UGR=0

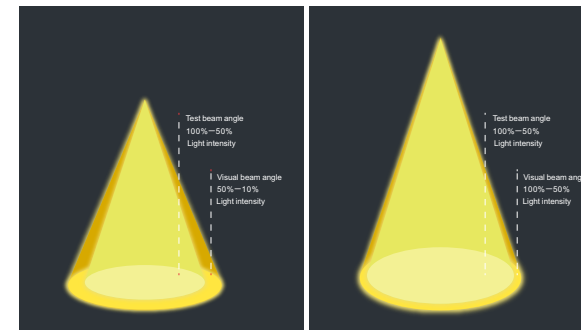
## High Transparency • Show More Details

Utilize the extremely strong penetrability of light to improve the transparency of the lighting space



## High Uniformity • No Accessory Facula

Close illumination uniformity,  
More comfortable visual experience, Longer range



### Direct Light

Facula fading and smooth transition  
Visual beam angle > Test beam angle  
Some accessory facula and smooth fading

### Reflective Light

Uniform illumination distribution and precise light control  
Visual beam angle ≈ Test beam angle  
Virtually no accessory facula

## Product Catalogue

1. Reflective Light Ring Chandelier
2. Reflective Light Ring Ceiling Light
3. Reflective Light Ring Desk Light
4. Reflective Light Ring Floor Light
5. Reflective Light Linear Chandelier
6. Reflective Light Linear Floor Light
7. Ultra-thin Reflective Spotlight

## Reflective Light Ring Chandelier









### Reflective Light Ring Chandelier Parameters

Model Number	OH401D	OH601D
Dimensions	φ 400XH30mm	φ 600XH30mm
Power	30W	50W
Input	110–240V	
CCT	2700–5700K	
Luminous Flux	2600 lm	3900 lm
Beam Angle	Two-Tone:18°	Homochrome : 36°/45°
Ra	> 95	
UGR	+1.0/-1.3	
Material	High-Quality Aluminum	
Color	Black/White/Grey/Rose Golden	



## Reflective Light Ring Ceiling Light





#### Reflective Light Single Ring Ceiling Light Parameters

Model Number	OH401C	OH601C
Dimensions	φ 400XH30mm	φ 600XH30mm
Power	30W	50W
Input	110–240V	
CCT	4000K	
Luminous Flux	2600 lm	3900 lm
Beam Angle	36°	
Ra	> 95	
UGR	+1.0/–1.3	
Material	High-Quality Aluminum	
Color	Black/White/Grey/Rose Golden	

## Reflective Light Ring Ceiling Light







Reflective Light Composite Ring Ceiling Light Parameters

Model Number	OH401CM	OH601CM
Dimensions	φ 400XH30mm	φ 600XH30mm
Power (Outer Ring)	30W	50W
Power (Inner Ring)	25-50W	35-70W
Input	110-240V	
CCT (Outer Ring)	4000K	
CCT (Inner Ring)	2700K/ 4000K/ 5700K	
Luminous Flux	2600 lm	3900 lm
Beam Angle	36° + Floodlighting	
Ra	> 95	
UGR	Single Ring: +1.0/-1.3	
Material	High-Quality Aluminum	
Color	White	

## Reflective Light Ring Desk Light

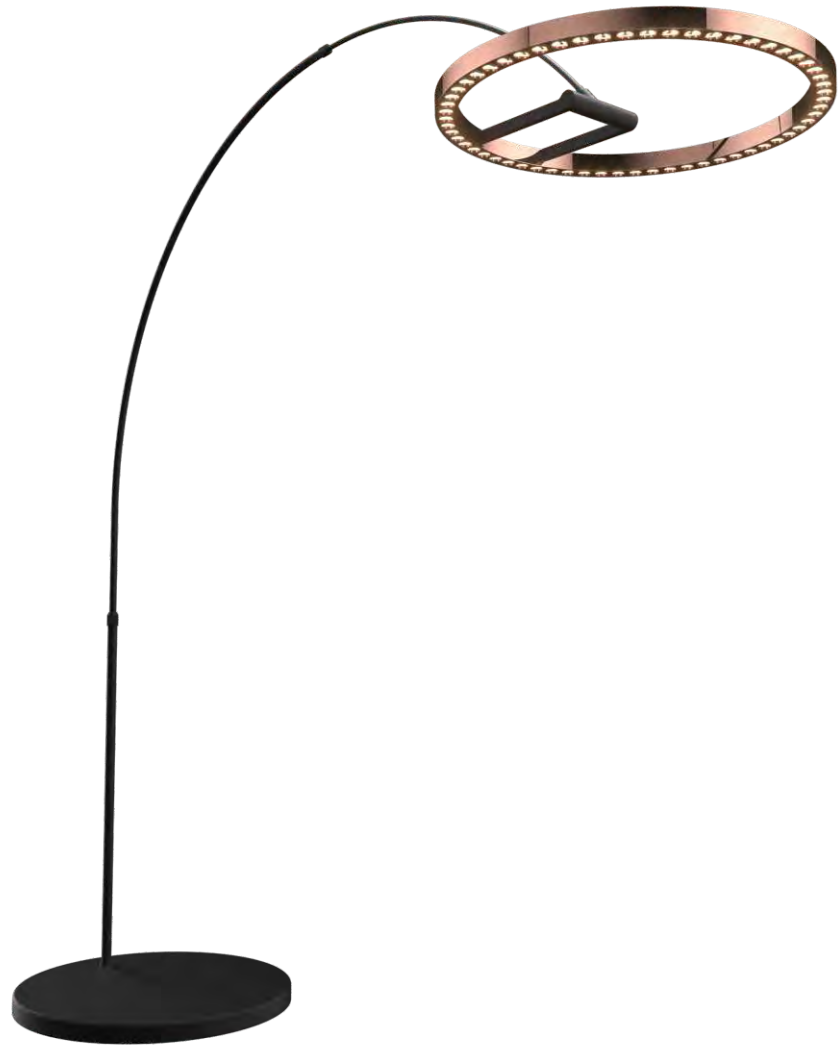




## Reflective Light Ring Floor Light



## Reflective Light Ring Floor Light



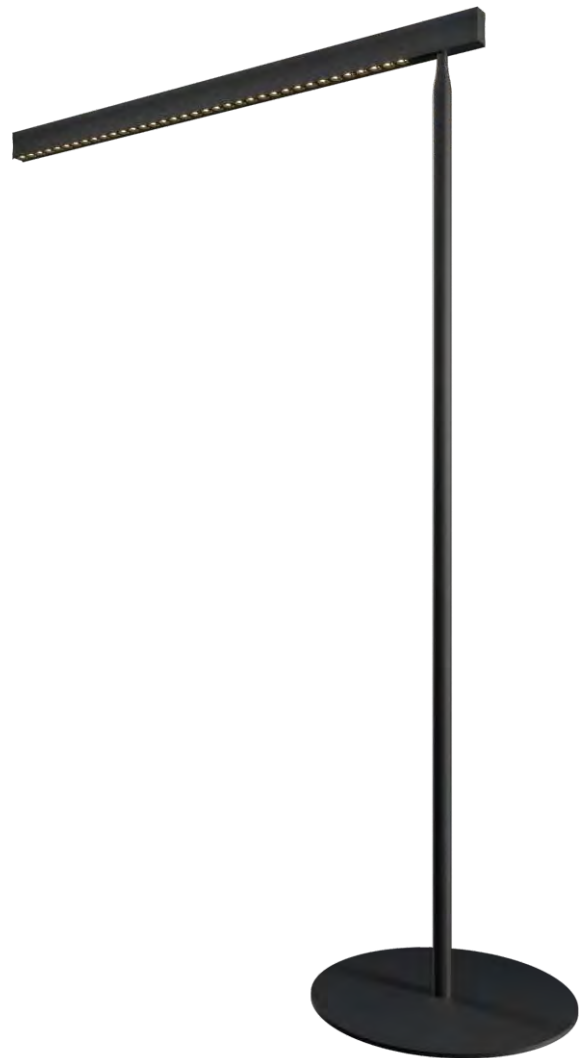
## Reflective Light Linear Chandelier



Model Number	OH101D
Dimensions	1084 X 34 X H64mm
Power	40W
Input	110-240V
CCT	2700-5700K
Luminous Flux	2400 lm
Beam Angle	18°
Ra	> 95
UGR	+1.0/-1.3
Material	High-Quality Aluminum
Color	Black/Grey



## Reflective Light Linear Floor Light



# Ultra-thin Reflective Spotlight





## T6 Ultra-thin Reflective Spotlight Parameters

Model Number	YD-T6A1Y75
Cutout Hole Size	φ 75mm
Power	8W
Input	110-240V
CCT	2700-6000K
Luminous Flux	400 lm
Beam Angle	24°
Ra	≥95
UGR	≤5
Material	High-Quality Aluminum
Color	White





Zhongshan Gamder Electric Appliance Co., Ltd.

---

Tel: 0086 760 2255 1677    [www.artdna-global.com](http://www.artdna-global.com)    Mail: [artdnasales\\_01@gamder.cn](mailto:artdnasales_01@gamder.cn)  
Addr: No.8-1 Middle of Industry Avenue, XiaoLan Town, ZhongShan, GuangDong, China.

---